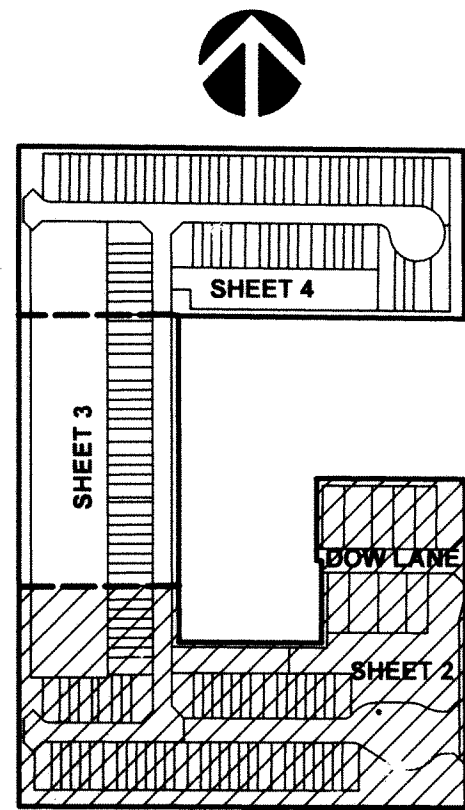
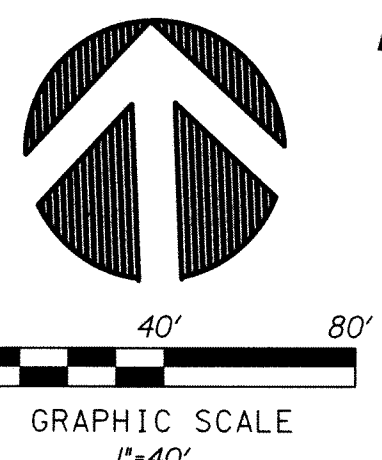


**PERIMETER**  
**SURVEYING & MAPPING**  
 Certificate of Authorization No. LB7264  
 Prepared by: Jeff S. Hodapp, P.S.M.  
 947 Clint Moore Road  
 Boca Raton, Florida 33487  
 Tel. (561) 241-9988  
 Fax: (561) 241-5182



**KEY MAP**  
NOT TO SCALE

**NOTES:**  
**COORDINATES, BEARINGS AND DISTANCES**

COORDINATES SHOWN ARE GRID  
 DATUM - NAD 83 1990 ADJUSTMENT  
 ZONE - FLORIDA EAST  
 LINEAR UNIT - US SURVEY FOOT  
 COORDINATE SYSTEM 1983 STATE PLANE  
 TRANSVERSE MERCATOR PROJECTION  
 ALL DISTANCES ARE GROUND, UNLESS OTHERWISE NOTED  
 SCALE FACTOR = 1.000037  
 GROUND DISTANCE X SCALE FACTOR = GRID DISTANCE  
 BEARINGS AS SHOWN HEREON ARE GRID DATUM,  
 NAD 83 1990 ADJUSTMENT, FLORIDA EAST ZONE

**LEGEND:**

- SET P.R.M. (UNLESS OTHERWISE NOTED) 4" x 4" CONCRETE MON. WITH ALUMINUM DISK STAMPED •LB7264
- CENTERLINE
- PERMANENT CONTROL POINT
- L.B. 7264

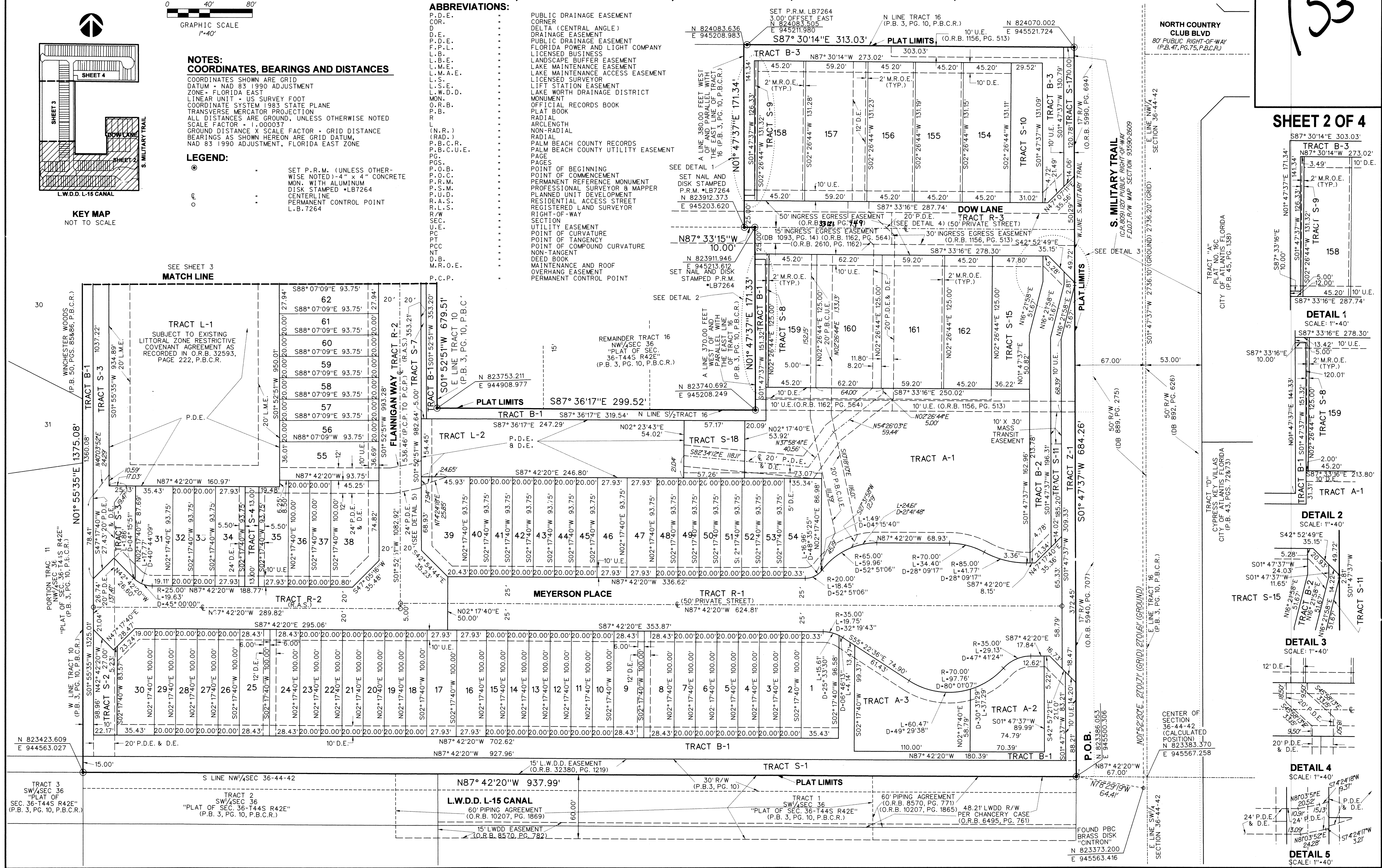
**ABBREVIATIONS:**

- P.D.E. PUBLIC DRAINAGE EASEMENT
- COR. CORNER
- D. DELTA (CENTRAL ANGLE)
- D.E. DRAINAGE EASEMENT
- P.D.E. PUBLIC DRAINAGE EASEMENT
- F.L.C. FLORIDA POWER AND LIGHT COMPANY
- L.B. LICENSED BUSINESS
- L.B.E. LANDSCAPE BUFFER EASEMENT
- L.M.E. LAKE MAINTENANCE EASEMENT
- L.M.A.E. LAKE MAINTENANCE ACCESS EASEMENT
- L.S. LICENSED SURVEYOR
- L.S.E. LIFT STATION EASEMENT
- L.W.D.D. LAKE WATER DRAINAGE DISTRICT MONUMENT
- MON. MONUMENT
- O.R.B. OFFICIAL RECORDS BOOK
- P.B. PLAT BOOK
- P.B.C.U.E. PALM BEACH COUNTY UTILITY EASEMENT
- P.C. PAGE
- P.C.S. POINT OF BEGINNING
- P.O.C. POINT OF COMMENCEMENT
- P.R.M. PERMANENT REFERENCE MONUMENT
- P.S.M. PROFESSIONAL SURVEYOR & MAPPER
- P.U.D. PLANNED UNIT DEVELOPMENT
- R.A.S. REGISTERED LAND SURVEYOR
- R.W. RIGHT-OF-WAY
- SEC. SECTION
- U.E. UTILITY EASEMENT
- P.O.C. POINT OF COMMENCEMENT
- P.O.T. POINT OF TANGENCY
- P.O.C. POINT OF COMPOUND CURVATURE
- NT. NON-TANGENT
- M.B. DEED BOOK
- M.R.O.E. MAINTENANCE AND ROOF OVERHANG EASEMENT
- P.C.P. PERMANENT CONTROL POINT

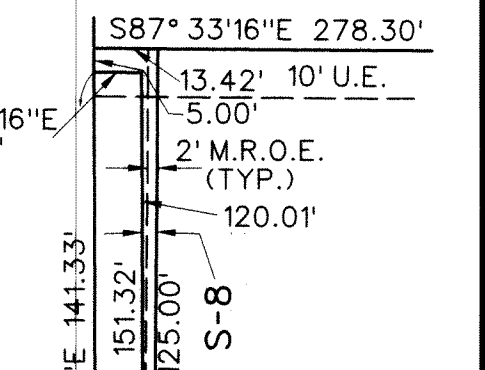
**HEATHWOOD RESERVE P.U.D.**  
 A REPLAT OF ALL OF TRACT 10 AND A PORTION OF TRACTS 9 AND 16 OF THE NORTHWEST 1/4 OF SECTION 36, TOWNSHIP 44 SOUTH, RANGE 42 EAST, "PLAT OF SEC. 36 - T44S, R42E." ACCORDING TO THE PLAT THEREOF RECORDED IN PLAT BOOK 3, PAGE 10, OF THE PUBLIC RECORDS OF PALM BEACH COUNTY, FLORIDA, IN SECTION 36, TOWNSHIP 44 SOUTH, RANGE 42 EAST, PALM BEACH COUNTY, FLORIDA.

153

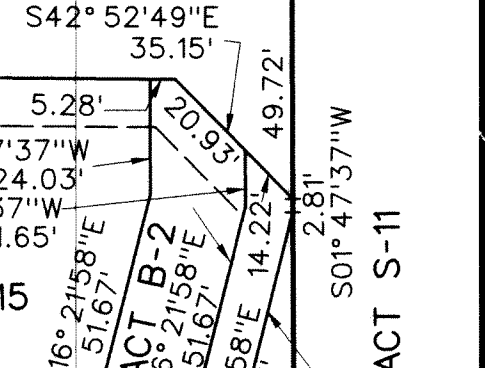
**SHEET 2 OF 4**



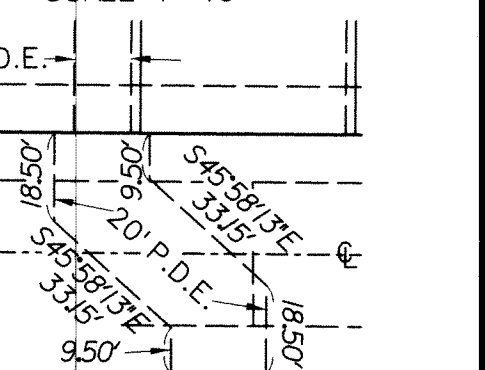
**DETAIL 1**  
SCALE: 1"=40'



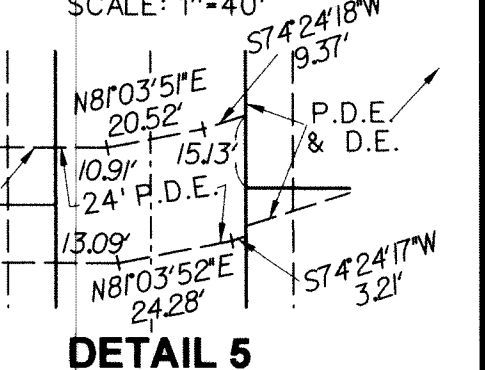
**DETAIL 2**  
SCALE: 1"=40'



**DETAIL 3**  
SCALE: 1"=40'



**DETAIL 4**  
SCALE: 1"=40'



**DETAIL 5**  
SCALE: 1"=40'

